

# ProActive DBA™ Visual Space Manager™

## Introduction

ProActive DBA **Visual Space Manager** from White Sands Technology, Inc. provides automated solutions to the DBA's toughest database tuning and maintenance problems.

It is designed for expert DBAs and Performance & Tuning experts who require the ultimate in analysis and tuning capabilities.

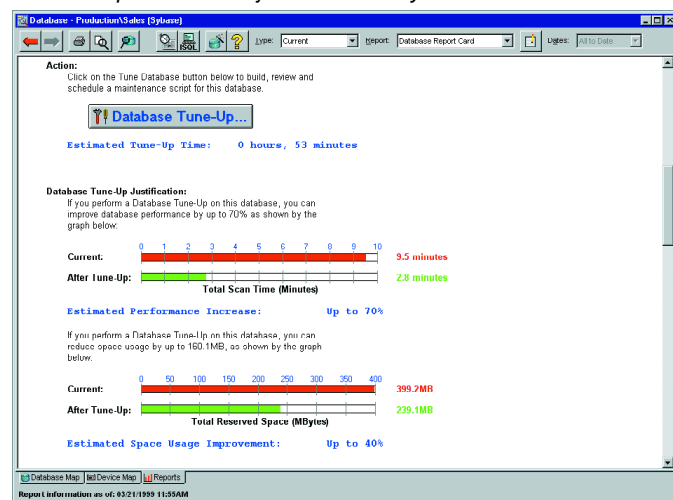
Unlike other products which only show the symptoms of poor performance, Visual Space Manager includes true in-depth analysis of your database's storage structure, to get to the root causes of performance problems on your servers.

It shows you how fragmentation, wasted space, index distribution inaccuracy and poor table design harm your server's performance, and gives you the tools to fix performance problems with just a click of the mouse!

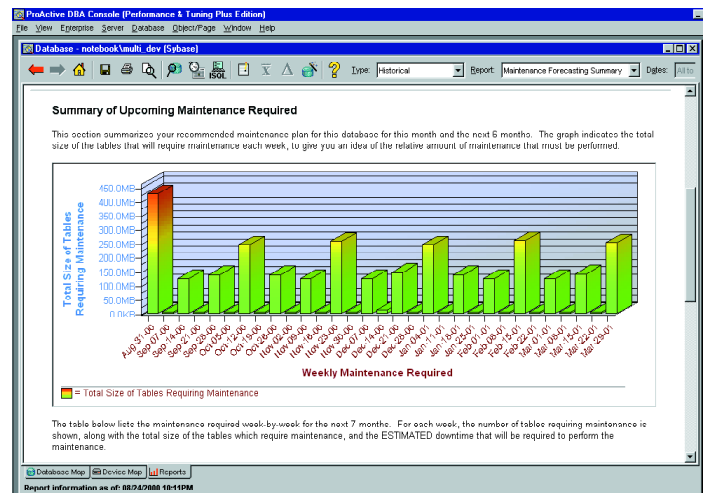
## Improve Database Response Time

Our customers have taken what they thought was a properly-tuned SQL Server database, used Visual Space Manager to analyze and optimize the database, and have seen performance increase by **30% to 50%** or more, and stay that way!

*Faster response time is just a click away!*



*Database Report Card shows overall database health and performance at-a-glance. Wow, a database tune-up will increase performance by up to 70%, and reclaim up to 40% disk space!*



*Maintenance Forecasting reports help you avoid unplanned downtime while maintaining peak performance!*

You owe it to yourself (and to your users!) to find out how Visual Space Manager can improve performance on *your* Sybase servers.

## Increase Availability for 24x7 Servers

Visual Space Manager shows you where maintenance is required in your databases, so you don't waste time defragmenting tables or updating index statistics unnecessarily. Plus, our Maintenance Forecasting reports predict future maintenance and downtime requirements, so you can plan maintenance windows at appropriate times.

Graphical Capacity Planning reports show you future projected database growth at a glance, so you can avoid unplanned downtime due to exceeding server or database capacity.

## Boost Productivity

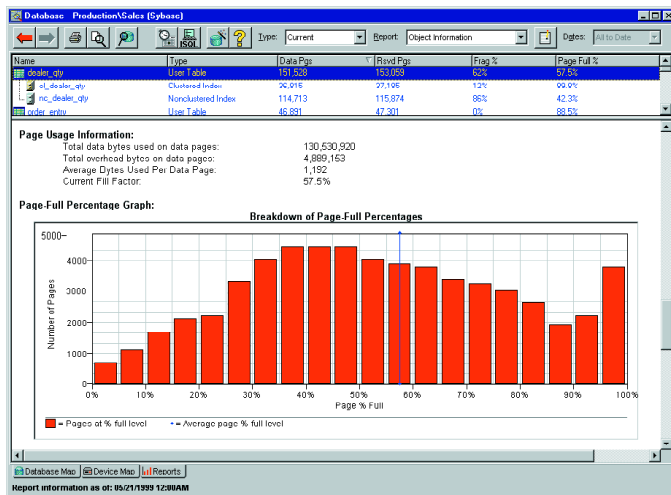
Save huge amounts of DBA manual labor with Visual Space Manager's automated analysis and maintenance facilities, meaning more productivity for you and your team! Our database maintenance script generator frees DBAs from tedious script-building, and our analysis and reporting tools put the information you need right at your fingertips.

# ProActive DBA™ Visual Space Manager™

## Advanced Performance Tuning

Visual Space Manager's extensive reporting give you exact-to-the-byte numbers you can count on for true performance tuning and space management.

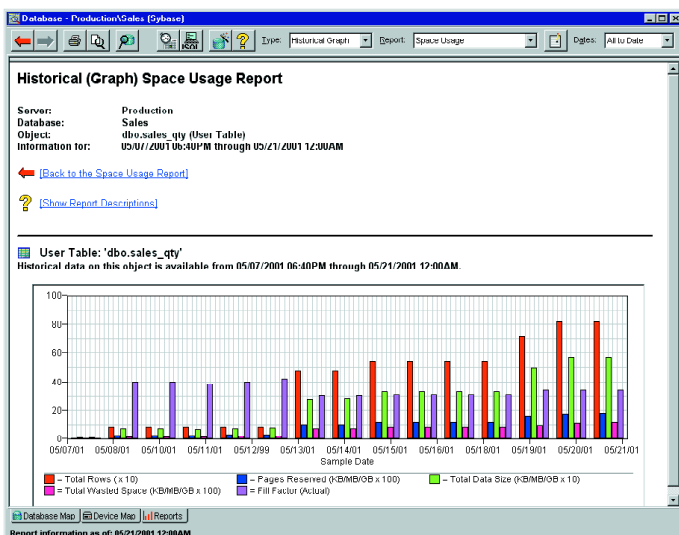
You can get detailed information on a particular table or index, including a page-usage histogram, index distribution graph and row- and byte-level space usage information. And, fully-customizable summary reports list space usage, fragmentation and other information by table and index.



Detailed reporting gives you total control over your database's performance!

## Historical Trending for Proactive Planning

Get out of "emergency mode"! Visual Space Manager's historical trending reports let you track growth of fragmentation, space usage and other indicators over time, so you can



Historical reports and graphs let you keep tabs on fragmentation and space usage growth.

proactively plan maintenance and expansion before problems arise.

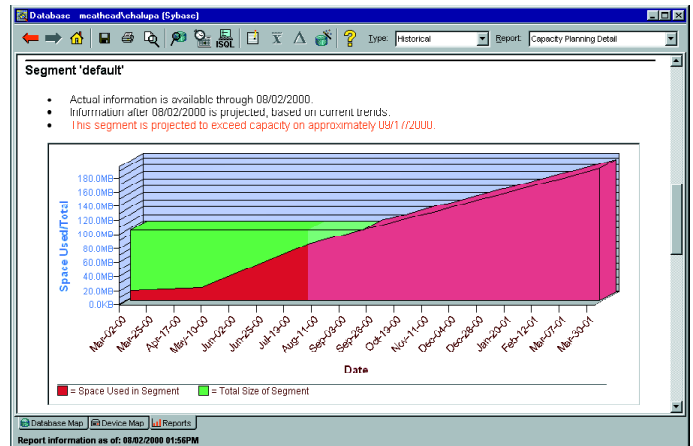
## Cost Reduction

Save money by avoiding expensive hardware upgrades. Visual Space Manager helps you reclaim wasted space from your database's disk devices and cache. Better disk space utilization, improved cache effectiveness and hit ratios give you more performance from the hardware you already have.

## Capacity Planning

Do you rely on inaccurate sp\_spaceused estimates for capacity planning? Visual Space Manager's exact-to-the-byte space usage reporting and historical trend reporting let you accurately plan for future expansion by telling you how quickly each database and object grows over time, when the database and each segment will run out of space, and how much extra space will be required to handle growth for the next 12 to 24 months.

## Learn Server Internals

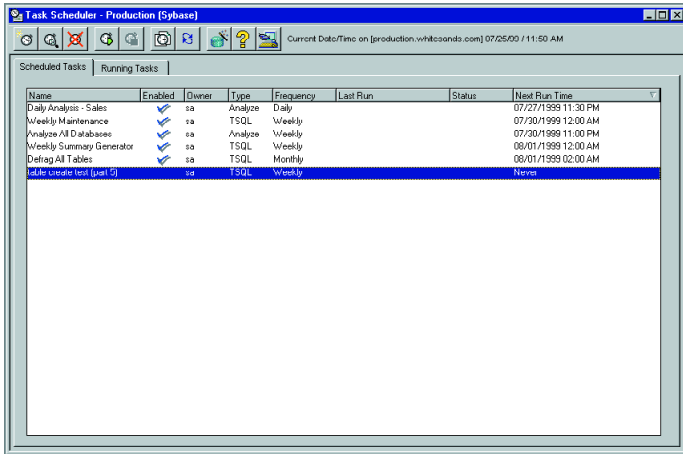


Capacity Planning reports predict future database space requirements.

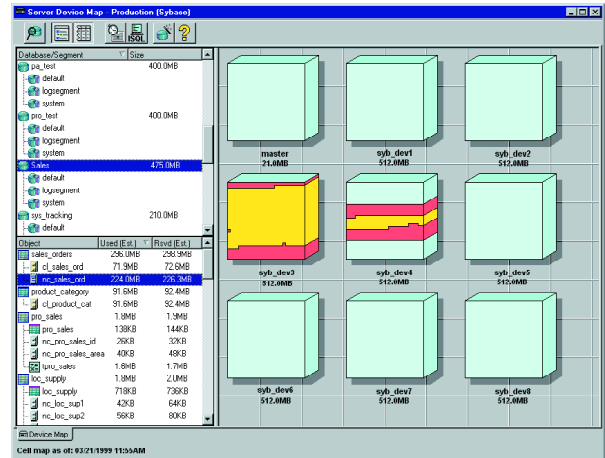
When used with the ProActive DBA Disaster Recovery Toolset, Visual Space Manager opens up the "black box" called Sybase ASE, so you can see how it stores your data internally. View page dumps and examine data row-by-row; navigate index, OAM, distribution, GAM and other page types; learn how to optimize table design and object placement for best performance; educate your DBAs for more advanced performance tuning.

## Job Scheduler

Visual Space Manager's integrated, comprehensive job scheduler lets you run maintenance jobs at regular intervals to keep your database running at peak performance all the time. Plus, use it to automatically perform database analysis so reports are kept up-to-date.



Schedule database maintenance and analysis tasks for automatic execution via the Task Scheduler window.



Device map shows where object data resides on each SQL Server device—makes I/O load balancing a snap!

## Detailed Reporting

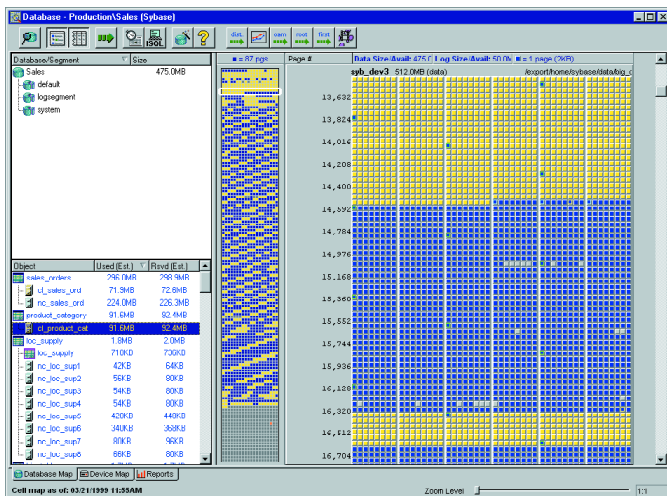
Visual Space Manager's reports show you the causes of poor performance on your Sybase server: fragmentation, poor space usage, index distribution inaccuracy, poor table design and more.

Our unique Database Report Card shows an overall indication of your database's health and performance in each area.

Then, drill down to see Exception Reports and detailed reports which show you information and highlight problems on a table-by-table basis.

## Visual I/O Load Balancing

Visual Space Manager's graphical page map and device map windows let you view object locations at-a-glance, giving you total control over I/O load balancing and object placement.



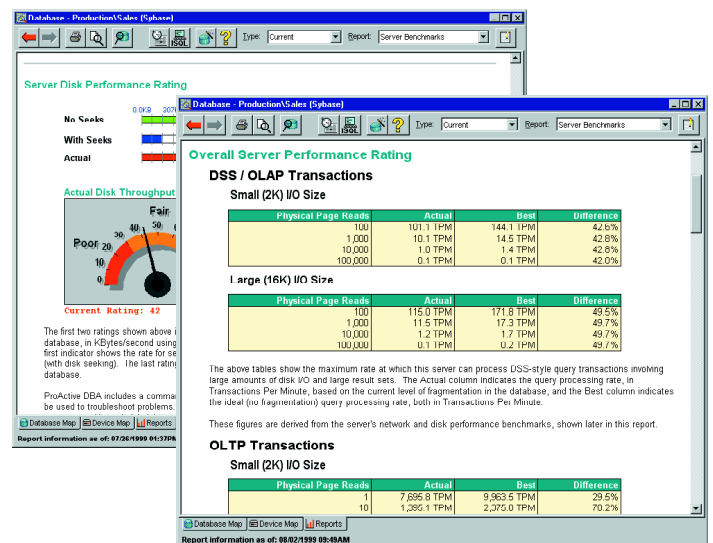
Database Page Map shows you object locations, space usage, fragmentation visually.

## Server Benchmarking

Visual Space Manager's sophisticated benchmarking utilities and reports let you graphically view the performance of your server, see the effects of fragmentation and locate performance bottlenecks. Compare your system's actual disk and network performance against the hardware's raw throughput capacity to see if your server is performing up to speed!

## Table Diagnostics

Exception reports highlight tables with inefficient design and poor index definitions, so you can optimize your schemas for performance!



Benchmarking reports help you identify server performance bottlenecks.

# ProActive DBA™ Visual Space Manager™

---

---

## Purchase Justifications

- Improve database response time by optimizing data structure
- Reduce downtime by avoiding unnecessary maintenance, faster DBCCs and improved performance
- Increase users' productivity
- Increase DBA productivity, reduce man-hour requirements via Automated Database Maintenance
- Cost reduction through increased efficiency of existing hardware (disk and server cache)
- Find and reclaim wasted database space
- Accurate capacity planning

---

## Major Product Features

- Database structure analysis
- High-level database reporting
- Maintenance forecasting
- Capacity planning
- Database device map for I/O load balancing
- Comprehensive job scheduler for database analysis, maintenance and T-SQL tasks
- Graphical database page map
- Server disk, network and data access library benchmarks for measuring I/O subsystem performance
- e-Reports™ automatically send reports via e-mail
- Integration with other ProActive DBA products (Diagnostic Monitor, SQL Query Analyzer and Disaster Recovery Toolset) in a single framework

---

## Reports Available

- Database Report Card
- Server Benchmarks
- Exception Reports
- Maintenance Forecasting Summary and Detail
- Capacity Planning Summary and Detail
- Space Usage
- Page Usage
- Wasted Space
- Wasted Extent Space
- Overhead Space Report
- Fragmentation Summary

- Fragmentation / Performance Reports
- Cache Effectiveness
- Page Chain Order
- Extent Interleaving
- Row Information
- Index Distribution Analysis
- Object Information Report—gives incredibly detailed analysis on a table/index
- Table Diagnostics Exception Report
- Object Sample Dates
- Custom User-Defined Reports
- Server-wide and Enterprise-wide reports
- Over 80 reports in all!

---

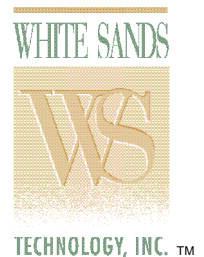
## Workstation Requirements

- Windows XP/2000/NT 4.0 or Windows 95/98/Me
- Pentium 200 or faster CPU recommended
- 128MB or more RAM
- 100MB or more available disk space
- 800x600 or better display
- Sybase and/or Microsoft client software installed
- Microsoft TCP/IP installed

---

## Database Server Platforms Supported

ProActive DBA supports **all** major Sybase platforms; versions 11.0 through 12.5 and higher are supported.



[www.whitesands.com](http://www.whitesands.com)