

ProActive DBA™ Database Maintenance Manager™

Database Maintenance and Diagnostics for Sybase and Microsoft SQL Server

Introduction

ProActive DBA Database Maintenance Manager from White Sands Technology, Inc. provides automated solutions to the DBA's toughest database tuning and maintenance problems. It is designed for the casual DBA who wants to improve performance with a minimal expenditure of time.

ProActive DBA is the only product to include true in-depth analysis of your database's storage structure, to address the root causes of poor performance.

Using a clear, intuitive graphical interface, it shows you how fragmentation, wasted space and index distribution inaccuracy are harming your database's performance, and gives you the tools to fix performance problems with just a click of the mouse!

How Will ProActive DBA Benefit Me?

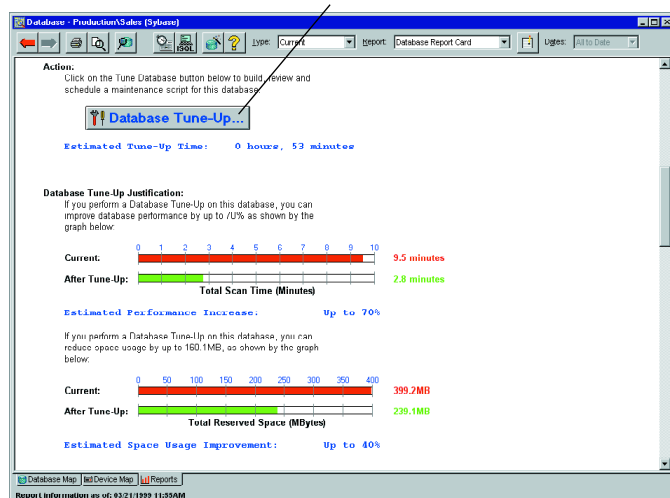
ProActive DBA Database Maintenance Manager provides benefits in several major areas.

Improved Response Time

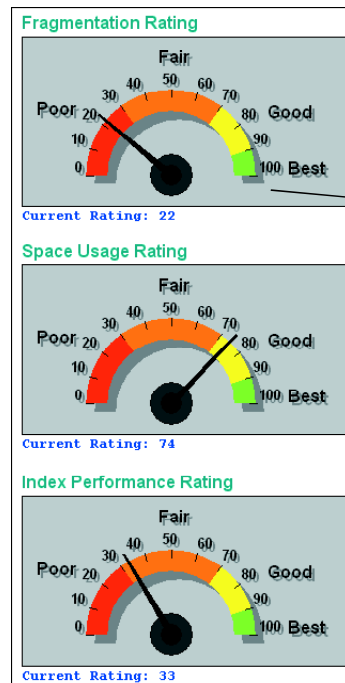
Our customers have taken what they thought was a properly-tuned SQL Server database, used ProActive DBA to analyze and optimize the database, and have seen performance increase by **30% to 50%** or more, and stay that way!

You owe it to yourself (and to your users!) to find out how ProActive DBA can improve performance on *your* ASE and SQL Server systems.

Faster response time is just a click away!



Database Report Card shows overall database health and performance at a glance. Wow, a database tune-up will increase performance by up to 70%, and reclaim up to 40% of disk space!



Increased Availability for 24x7 Servers

Knowing when you need to perform database maintenance versus when you don't makes all the difference in the world when you have a limited time window for maintenance. ProActive DBA lets you prevent costly downtime by performing defrags and statistics updates only when necessary.

And, keeping tables defragmented means DBCCs run faster, so less downtime is required for performing integrity checks.

Increased Productivity

Save huge amounts of DBA manual labor with ProActive DBA's automated analysis and maintenance facilities, meaning more productivity for you and your team!

Cost Reduction

Save money by avoiding expensive hardware upgrades. ProActive DBA helps you reclaim wasted space from your database's disk devices and cache. Better disk space utilization, improved cache effectiveness and hit ratios give you more performance from the hardware you already have.



www.whitesands.com

ProActive DBA™ Database Maintenance Manager™

Database Maintenance and Diagnostics for Sybase and Microsoft SQL Server

How Does ProActive DBA Work?

Our Database Performance Wizard takes you through the process of analyzing your database, and then recommends performance-tuning solutions to help you get the most speed out of your SQL Server.

Detailed Reporting

ProActive DBA's reports show you the causes of poor performance on your SQL Server: fragmentation, poor space usage, index distribution inaccuracy and more.

Our unique Database Maintenance Report shows an overall indication of your database's health and performance in each area.

Exception Reports and other detailed reports show you problems on a table-by-table basis.

Maintenance Solutions

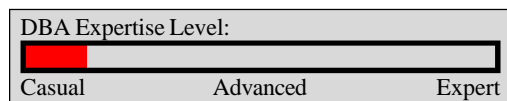
ProActive DBA gives you easy-to-use tools to fix performance problems and get your databases running at top speed again!

With ProActive DBA, complete database maintenance is just a few mouse clicks away! Set up maintenance tasks to perform defragmentation, update statistics, stored procedure recompiles and DBCC verification checks based on user thresholds.

Then, use our comprehensive Task Scheduler to run your maintenance tasks at regular intervals to keep your database running at peak performance all the time! E-mail and pop-up notifications let you know your maintenance jobs completed and alert you to errors.

Purchase Justifications

- Increase database performance
- Increase DBA productivity, reduce man-hour requirements through Automated Database Maintenance
- Increase your users' productivity through improved database performance
- Cost reduction through increased efficiency of existing hardware—avoid/postpone upgrades



- Reduced downtime from avoiding unnecessary maintenance, DBCCs run faster
- Improved cost-effectiveness of database server by finding and reclaiming wasted database space

Major Product Features

- Database structure analysis
- High-level database reporting
- Automated database maintenance
- Agent-based task scheduler for database analysis and maintenance tasks

Reports Available

- Database Maintenance Report
- Exception Reports
- Space Usage
- Fragmentation Summary
- Index Distribution Analysis
- Server-wide and Enterprise-wide reports (requires Enterprise Option)

System Requirements

- Windows XP/2000/NT 4.0 or Windows 95/98/Me
- Pentium 200 or faster CPU recommended
- 64MB or more RAM
- 100MB or more available disk space
- 800x600 or better display
- Sybase and/or Microsoft client software installed
- Microsoft TCP/IP installed

Database Server Platforms Supported

ProActive DBA supports **all** major Sybase and Microsoft SQL Server platforms including Unix, Windows XP/2000/NT and others.



www.whitesands.com