

Nuclear Medicine Instrumentation
Jennifer Prekeges

Corrections to the First Printing

- P. 37, Eq. 4-2: the entire right side of the equation should be under a square root sign.
- p. 39, Sample Calculation 4-2: $\sigma_{\text{capsule}} = 80$ counts/min, not 80 counts/2 min.
- p. 75, first paragraph under “Image Contrast”: the figure reference in the parentheses should be to Fig. 6-6a instead of Fig. 6-5a.
- p. 180, Sample Calculation 13-1: the last sentence should read “We can also express the Nyquist frequency as 0.5 cycle/pixel, so the cut-off frequency is equivalent to 0.4 cycles/pixel.” Just below that, the section heading should read “Spatial Resolution Measurement.”
- p. 196, Fig. 14-6 legend: edit the first sentence to read “... and heavy solid lines the assumed LOR in Figures 14-6c and d.”
- p. 236, Equation 17-4: the numerator should read “lung insert” instead of “long insert.”
- p. 247, end of first paragraph under “Image Acquisition”: end of the last sentence should read “... a continuous technique for the entire CT scan, ...”
- p. 264, Sample Calculation A-1: instead of “ E_a ” and “ E_a' ” in the equations, these should be “ E_γ ” and “ E_γ' .”
- p. 274, Fig. B-7 legend: the sentence at the end of the second line should read “The CR (differentiating) circuit...” and the sentence at the end of the fourth line should read “... shows a combined RC/CR circuit...”
- p. 21, Table 2-1, last line: add the word “electrons” after “84 trillion” and “400 trillion.”
- p. 89, end of paragraph under “Fan-Beam and Cone-Beam Collimators”: the reference should be to Chapter 11 rather than Chapter 12.
- p. 104, paragraph under “Object-Collimator Distance”: reverse the words “close” and “so,” so the sentence reads “... this means bringing the camera in so close that it touches the patient.”
- p. 130, Fig. 10-3: Arrow at bottom of figure should be pointing to the outside of the dotted circle, not to the inside of the circle.
- p. 165, Fig. 12-6 legend: remove the phrase “Correct with $\mu_{\text{eff}} = 0.12/\text{cm}$ ” immediately after the image title.
- p. 192, Table 14-2: Delete the “(Ce)” after “LSO” in the column heading.
- p. 197, second paragraph under “Time-of-Flight PET”: the word in the first sentence should be “tomograph” rather than “tomography”.
- p. 222, Sample Calculation 16-1: “a PET tomograph” not “tomography.”
- p. 252, paragraph under “Image Data Management”: the word should be “gigabyte”, not “gigbyte.”
- p. 284, Fig. C-1: annotation in upper left should be “light photon,” not “light photo.”

Fig. 1-1 (add labels for anode and cathode)

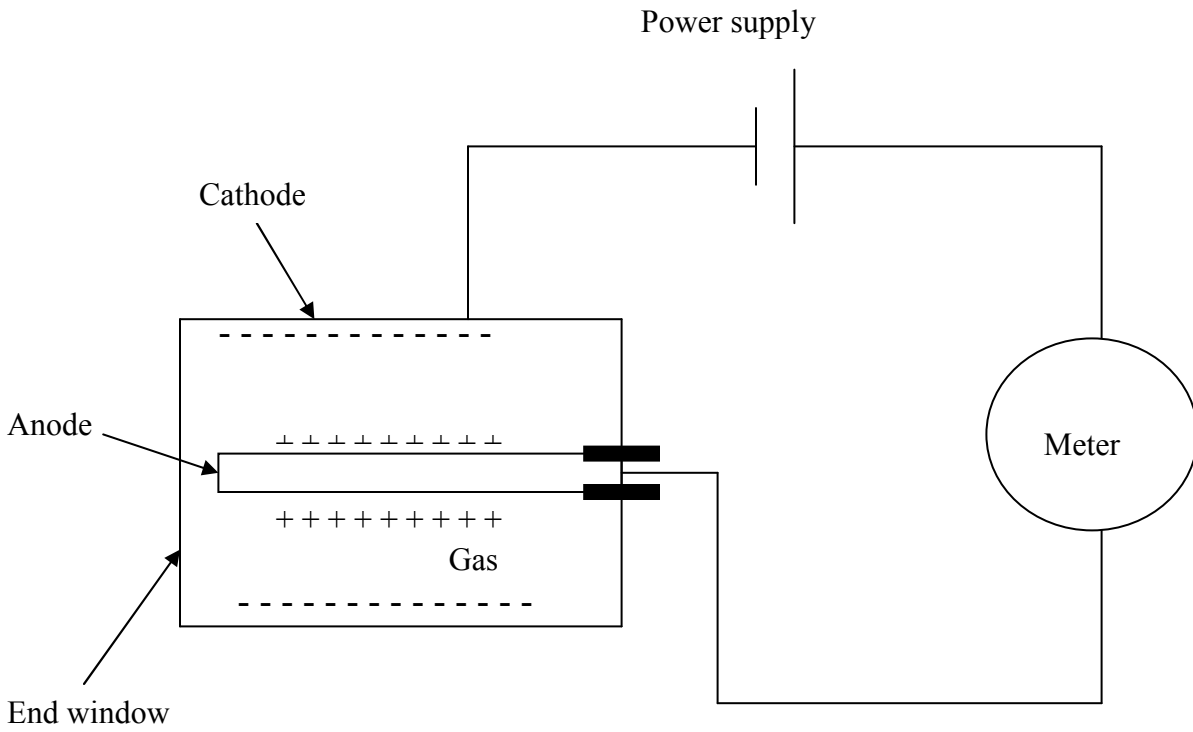


Fig. 2-2 (add label for anode)

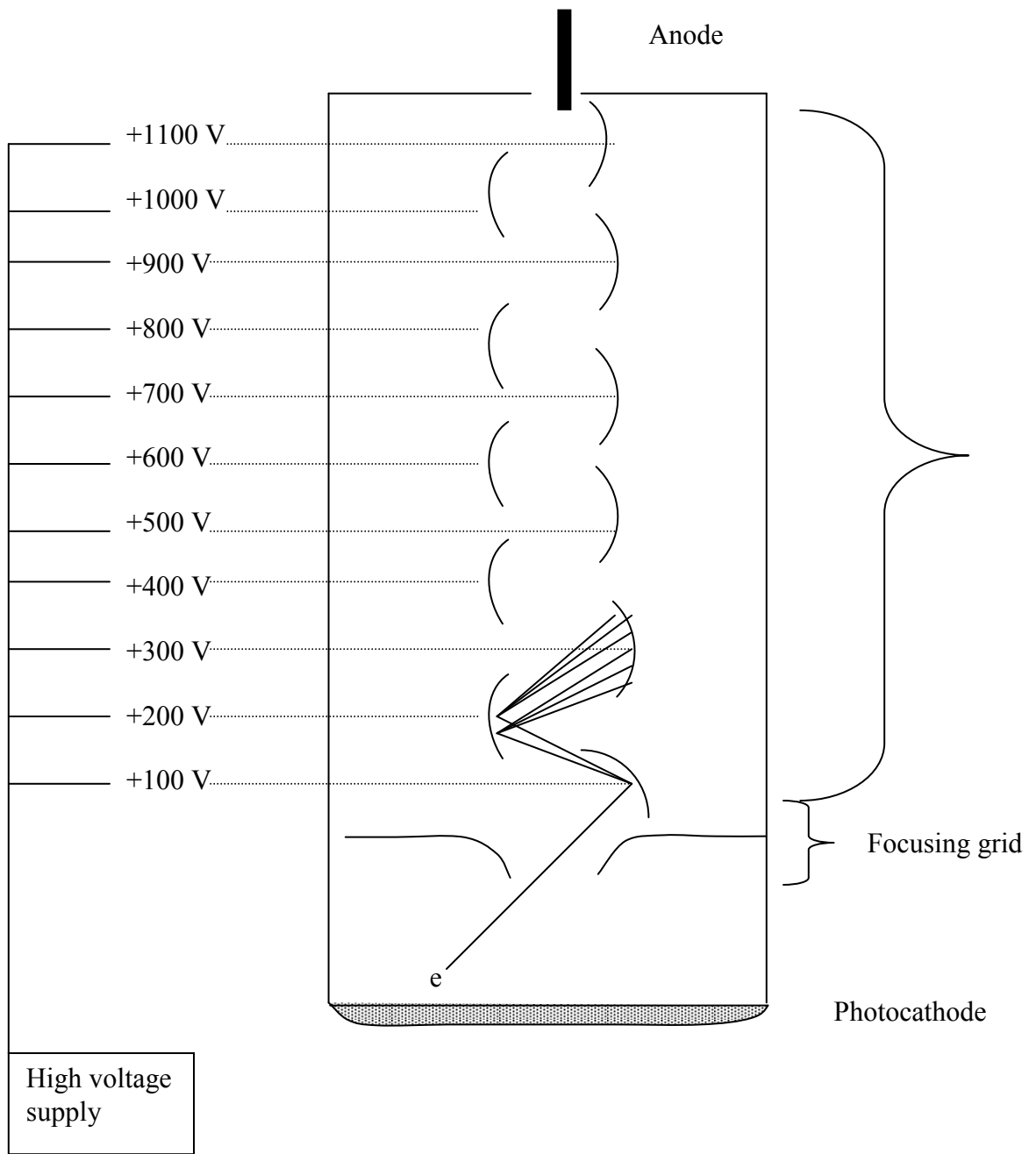


Fig. 3-1b (add extra electron next to the phosphorus atom)

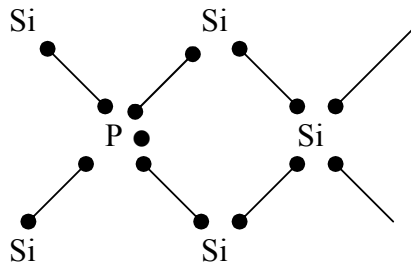


Fig. 4-5 (add gamma ray as origin of backscatter peak)

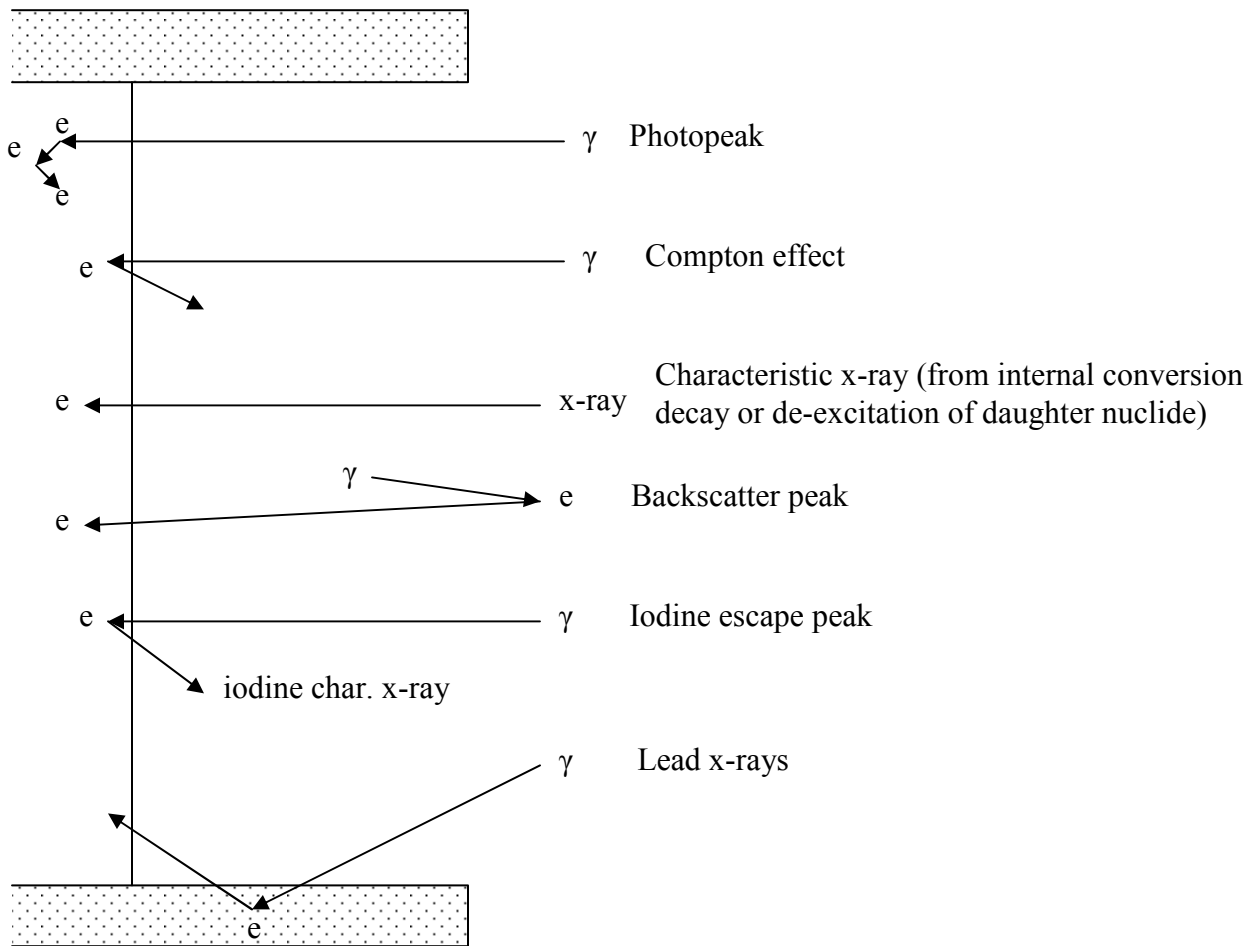


Fig. 14-7 (left-pointing arrow is “Photon B”)

